

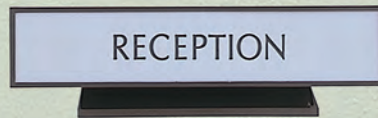
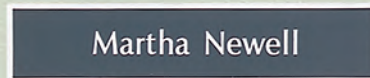
ARCHITECTURAL FRAMES

In Molded Plastic

Architectural Frames in Molded Plastic is a round and square corner system designed for quality interior signage. Nine different sizes can be interchanged to enhance any interior. The seven colors offered are PEWTER GRAY, MEDIUM GRAY, ALMOND, BROWN, ARCH BROWN, BLACK AND WHITE.



WINDOW
LENS NOT
AVAILABLE



Plates will snap out of frames for easy changes with the use of a suction cup.



Acrylic lenses are laser cut and snap into frames featuring paper graphics.



A black anodized aluminum bracket with concealed screws is used to mount double sided frames.

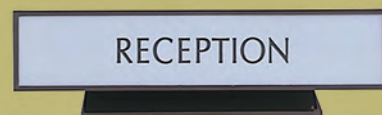
ARCHITECTURAL FRAMES, PLATES & LENSES

The 7000 series round corner and 8000 series square corner molded plastic frames are designed for quality interior signage. Each frame is molded in one of 7 matte colors: **PEWTER GRAY, MEDIUM GRAY, ALMOND, WHITE, BROWN, ARCH BROWN, AND BLACK.** All frames have a 1/2" outside depth, 1/8" thick walls and mounting holes for attaching to walls. The size of each frame is listed as an inside dimension and the inside radius on the round corner frames is 5/16". Each frame is designed to accommodate all sign material from 1/16" to 1/8" thick, or it's own plastic snap-in plate (See next page).

Part No.	Inside Dimension	Corner
7199	9 1/8" x 9 1/8"	Round
8199	9 1/8" x 9 1/8"	Square
7166	6 1/8" x 6 1/8"	Round
8166	6 1/8" x 6 1/8"	Square
7144	4 1/8" x 4 1/8"	Round
8144	4 1/8" x 4 1/8"	Square
7143	4 1/8" x 13 1/8"	Round
8143	4 1/8" x 13 1/8"	Square
7169	6 1/8" x 9 1/8"	Round
8169	6 1/8" x 9 1/8"	Square
7149	4 1/8" x 9 1/8"	Round
8149	4 1/8" x 9 1/8"	Square
7129	1 3/4" x 9 1/8"	Round
8129	1 3/4" x 9 1/8"	Square
7124	1 3/4" x 4 1/8"	Round
8124	1 3/4" x 4 1/8"	Square
8181	8 1/2" x 11"	Square Only

All holders and frames can be combined for quantity discounts.

See price list for current pricing and quantity discounts.



7500 BASE snaps into the 1 3/4" x 9 1/8" frame (both round or square) making a desk or counter unit. Base is 6"

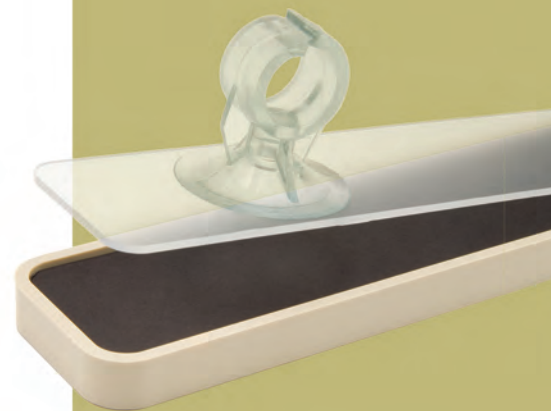
FRAMES WITH LENSES

Each frame size in both round or square corner is available with an .080 semi-flexible non-glare acrylic lens. Lenses are laser cut with small tabs that snap into frames. Lenses can be painted, screen printed, engraved or have tactile and braille attached to them. Each frame is supplied with a snap in lens and a matte black backing insert.

Add a "L" in front of the part number to request a lens.

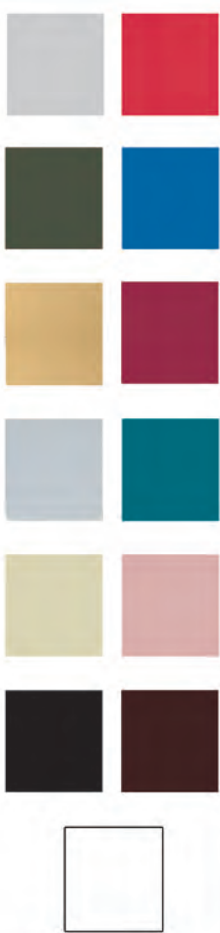
EX: L8199BL is a black 9-1/8" x 9-1/8" frame with lens

**Custom colors available.
Call for details.**



ARCHITECTURAL PLATES *In Molded Plastic*

Color Swatches



Gray/Gray
Gray/Black
Gray/White
Gray/Arch Brown

Almond/Black
Almond/Brown
Almond/Arch Brown
Almond/Almond
Almond/White

Brown/Brown
Brown/Almond

Arch Brown/Arch Brown
Arch Brown/ Almond
Arch Brown/White

Black/Black
Black/Almond
Black/Gray
Black/White

Red/White
Blue/White

Burgundy/White
Burgundy/Gray

White/White
White/Black

Brushed Gold/Black
Brushed Silver/Black

Teal/White
Teal/Gray
Teal/Almond

Mauve/White
Mauve/Gray
Mauve/Almond

Colors are only representative. Request a color keychain for exact color.

MOLDED PLATES FOR ARCHITECTURAL FRAMES

Molded plates are 1/8" thick with a 1/16" reveal around the perimeter leaving a handsome border. Each plate is designed to snap in and out of respective frames for changeable signs, or can be permanently mounted with two sided tape. Plates are molded in the same seven colors as the frames and then are stamped with a tough durable matte finish suitable for hot stamping, vinyl letters, or silk screening. For 2 ply engraving, 7 core colors and 13 surface colors can be combined for a quality contrasting engraved plate.

Molded Part No.	Laser Part No.	Plate Size	Corner
7299	5299	9 1/8" x 9 1/8"	Round
8299	6299	9 1/8" x 9 1/8"	Square
7266	5266	6 1/8" x 6 1/8"	Round
8266	6266	6 1/8" x 6 1/8"	Square
7244	5244	4 1/8" x 4 1/8"	Round
8244	6244	4 1/8" x 4 1/8"	Square
7243	5243	4 1/8" x 13 1/8"	Round
8243	6243	4 1/8" x 13 1/8"	Square
7249	5249	4 1/8" x 9 1/8"	Round
8249	6249	4 1/8" x 9 1/8"	Square
7229	5229	1 3/4" x 9 1/8"	Round
8229	6229	1 3/4" x 9 1/8"	Square
7224	5224	1 3/4" x 4 1/8"	Round
8224	6224	1 3/4" x 4 1/8"	Square
7269	5269	6 1/8" x 9 1/8"	Round
8269	6269	6 1/8" x 9 1/8"	Square
	6281	8 1/2" x 11"	Square

LASERABLE ARCHITECTURAL PLATES in popular colors

Plates suitable for use with Laser Engraving equipment. Plates are 1/16" thick and are designed to snap in and out of their respective frames. Specify matte or gloss finish.

NEW LASER PLATES FOR 7000 & 8000 SERIES

NEW LASER PLATES FOR 7000 & 8000 SERIES

Available color combinations include:

Top Color/Core Color

Red/White
Blue/White
Black/White
Green/White
Navy/White
Burgundy/White
Brown/White
Pine Green/White
Teal/White
Medium Walnut/White
Charcoal Marble/White

Verde Green Marble/White
Cranberry Marble/White
Rustico Granite/White
White/Black
Yellow/Black
Pumice/Black
Platinum Marble/Black
Brushed Gold/Black
Brushed Aluminum/Black
Platinum Marble/White

Laserable plates not stocked. May have a lead time up to 10 days.

BLACK	RED	BLUE
WHITE	WHITE	WHITE
GREEN	NAVY	BURGUNDY
WHITE	WHITE	WHITE
MEDIUM WALNUT	TEAL	PINE GREEN
WHITE	WHITE	WHITE
CHARCOAL MARBLE	CRANBERRY MARBLE	RUSTICO GRANITE
WHITE	WHITE	WHITE
VERDE GREEN MARBLE	WHITE	YELLOW
WHITE	BLACK	BLACK
PUMICE	BRUSHED GOLD	BRUSHED ALUMINUM
BLACK	BLACK	BLACK

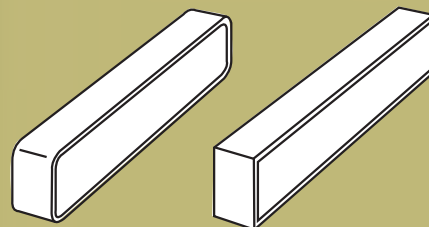
ARCHITECTURAL FRAMES *In Molded Plastic*

DESK BARS

Desk Bars are designed as a simple architectural nameplate holder or counter sign. They are 1" thick and have an inside dimension of 1 3/4" x 9 1/8" to accommodate our injected molded plate. The desk bar is available in **WHITE, PEWTER GRAY, ALMOND, BROWN, ARCH BROWN, AND BLACK.**

Jonathan Q. Smith
General Manager

**Custom colors available.
Call for details.**



Part No.	Inside Dimension	Corner
7029	1 3/4" x 9 1/8"	Round
8029	1 3/4" x 9 1/8"	Square

All holders and frames can be combined for quantity discounts.

See price list for current pricing and quantity discounts.

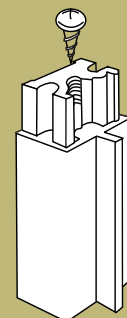
CORRIDOR FRAMES WITH BRACKETS

Anodized black aluminum bracket conceals screws while mounting a double sided corridor frame. Corridor frames are custom and non-returnable.



Inside of frame is not a flat surface. Raised pegs inside.

Part No.	Plate Size	Corner
7329	1 3/4" x 9 1/8"	Round
8329	1 3/4" x 9 1/8"	Square
7366	6 1/8" x 6 1/8"	Round
8366	6 1/8" x 6 1/8"	Square
7399	9 1/8" x 9 1/8"	Round
8399	9 1/8" x 9 1/8"	Square
7343	4 1/8" x 13 1/8"	Round
8343	4 1/8" x 13 1/8"	Square



Mount to Wall

Mounts to Plate

ARCHITECTURAL FRAMES IN MOLDED PLASTIC have many uses and provide a quality, inexpensive solution to your interior signage needs. On this page are some examples of the many ways in which are Architectural Plastic Frames can be used.

